

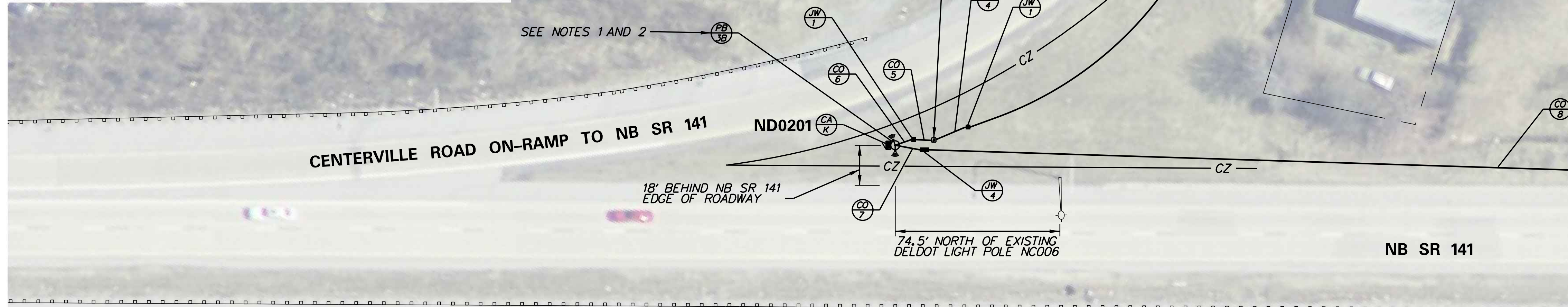
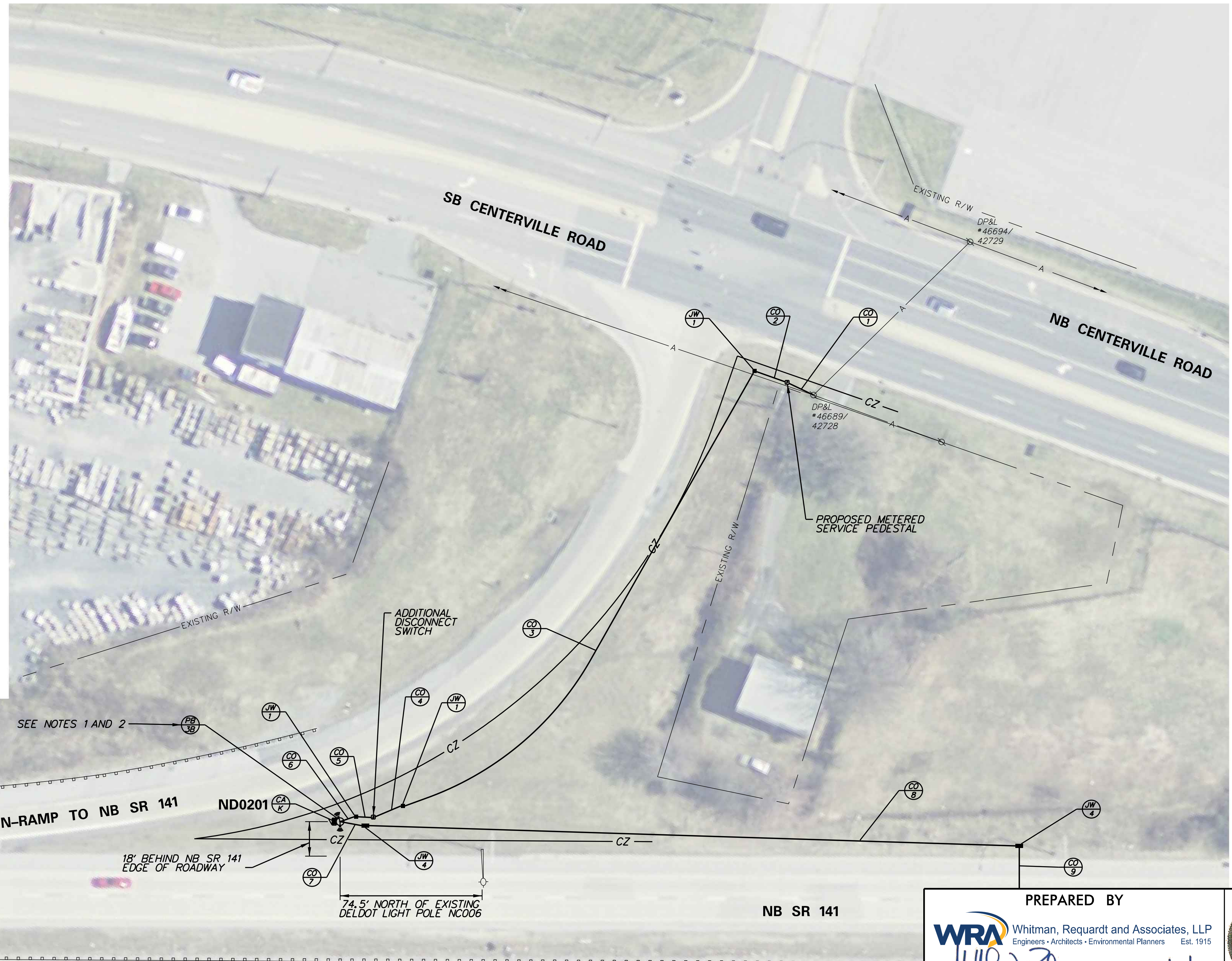
LEGEND			
	PROPOSED POLE BASE IDENTIFIER		PROPOSED MICROWAVE DETECTION DEVICE WITH POLE MOUNTED CONTROL CABINET
	PROPOSED CABINET IDENTIFIER		EXISTING LUMINAIRE
	PROPOSED JUNCTION WELL IDENTIFIER (TYPE OF JUNCTION WELL)		EXISTING UTILITY POLE
	PROPOSED OVERHEAD RUN IDENTIFIER (# OF OVERHEAD RUN)		PROPOSED JUNCTION WELL
	PROPOSED CONDUIT RUN IDENTIFIER (# OF CONDUIT RUN)		PROPOSED SERVICE PEDESTAL
	PROPOSED DISCONNECT SWITCH		

CONDUIT RUN SCHEDULE					
CO#	# OF CONDUITS	SIZE	LENGTH	B/T/O	AMOUNT AND TYPE OF CABLE/ WIRE
1*	1	2.0 IN	15 FT	T	[NEW (1) 2/*8 U.F. W/GROUND - LINE SIDE]
2*	1	2.0 IN	16 FT	T	[NEW (1) 2/*8 U.F. W/GROUND - LOAD SIDE]
3	1	4.0 IN	300 FT	T	[NEW (1) 2/*8 U.F. W/GROUND - LOAD SIDE]
4*	1	2.0 IN	15 FT	T	[NEW (1) 2/*8 U.F. W/GROUND - LOAD SIDE]
5*	1	2.0 IN	7 FT	T	[NEW (1) 2/*8 U.F. W/GROUND - LOAD SIDE]
6	1	3.0 IN	8 FT	T	[NEW (1) 2/*8 U.F. W/GROUND - LOAD SIDE]
7	1	3.0 IN	12 FT	T	EMPTY
8	1	4.0 IN	340 FT	T	EMPTY
9	1	4.0 IN	126 FT**	B	EMPTY

\* RIGID GALVANIZED STEEL CONDUIT  
 \*\* CONDUIT CONTINUED ON ADJACENT SHEET  
 B = BORE, T = TRENCH, O = OPEN CUT

**NOTES:**

- POWER FOR PROPOSED DETECTORS SHALL BE SUPPLIED BY EXISTING WOOD UTILITY POLE DP&L #46694/42729 AERIALY CONNECTED TO EXISTING WOOD UTILITY POLE DP&L #46689/42728.
- DETECTOR UNIT FACING NB SR 141 TO BE MOUNTED A MINIMUM MOUNTING HEIGHT OF 18' AND A MAXIMUM MOUNTING HEIGHT OF 35' WITH A MANUFACTURER RECOMMENDED MOUNTING HEIGHT OF 27'. DETECTOR UNIT FACING CENTERVILLE RD ON-RAMP TO NB SR 141 TO BE MOUNTED A MINIMUM MOUNTING HEIGHT OF 17' AND A MAXIMUM MOUNTING HEIGHT OF 33' WITH A RECOMMENDED MOUNTING HEIGHT OF 26'. FIELD ADJUST MOUNTING HEIGHT AS REQUIRED TO ACHIEVE MAXIMUM DATA OUTPUT. DETECTOR WILL COMMUNICATE WITH THE TMC VIA A FIBER OPTIC INTERCONNECTION.
- DIMENSIONS SHOWN ARE TO THE CENTER OF DETECTOR POLE BASE.
- THE RIGHT-OF-WAY INFORMATION DEPICTED ON THIS PLAN IS BASED ON THE NEW CASTLE COUNTY TAX PARCEL MAP.
- ALL UNDERGROUND AND OVERHEAD UTILITIES SHOWN ON THESE PLANS ARE SCHEMATIC ONLY AND MAY NOT BE COMPLETE. THE CONTRACTOR SHALL BE RESPONSIBLE FOR NOTIFYING MISS UTILITY, AND/OR THE APPROPRIATE UTILITY PRIOR TO THE BEGINNING OF CONSTRUCTION FOR THE UTILITY MARKOUTS. IF THE CONTRACTOR PERCEIVES THAT A CONFLICT BETWEEN UTILITIES AND THE TRAFFIC SIGNAL WILL OCCUR, THE CONTRACTOR SHALL NOTIFY DELDOT TRAFFIC IMMEDIATELY BEFORE CONSTRUCTION.
- ALL CONDUIT SHALL BE SCHEDULE 80 PVC WHEN INSTALLED BY TRENCHING OR OPEN CUT AND HDPE SDR-13.5 WHEN INSTALLED BY BORING, UNLESS OTHERWISE NOTED.
- THE CONTRACTOR SHALL CONTACT DENISE KSIAZEK (DELDOT) AT 302-981-6464 48 HOURS PRIOR TO THE INSTALLATION OF THE PROPOSED EMPTY CONDUITS TO COORDINATE THE FIBER OPTIC CONNECTION.



MATCH LINE - SEE SHEET 2

**NEW**

M:\31987-004\Contract\1-95\CADD\ITEMS off alignment work ahead of viaduct\SC01\_14\Wave.dgn 3/18/19 9:17:06 AM

PREPARED BY		
 Whitman, Reardon and Associates, LLP Engineers - Architects - Environmental Planners Est. 1915	DATE 3/18/19	
APPROVED FOR INSTALLATION		
 CHIEF TRAFFIC ENGINEER	DATE 3/19/19	

ADDENDA / REVISIONS

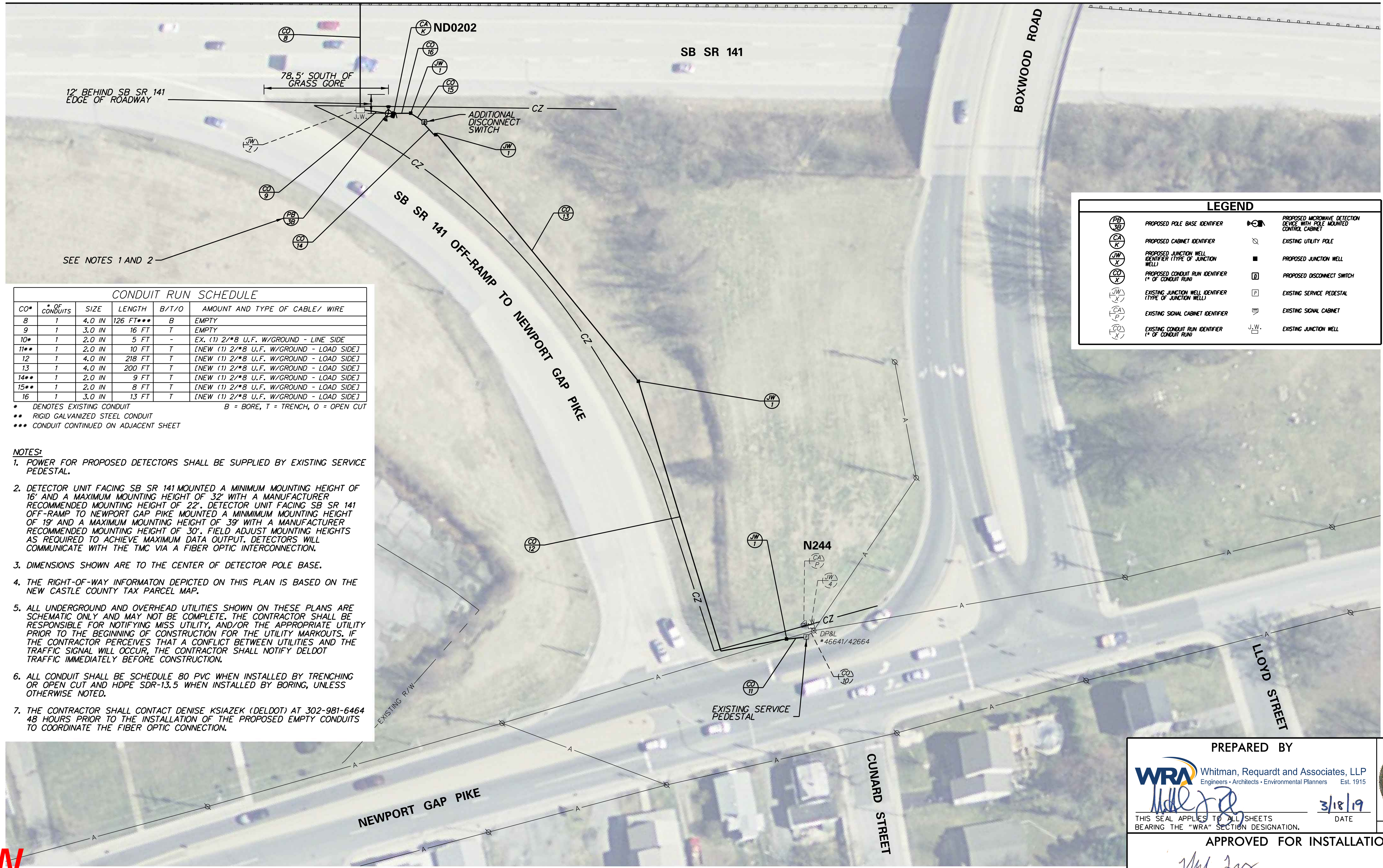
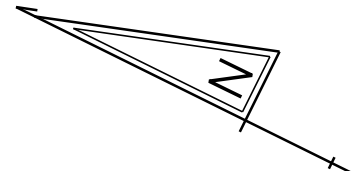


**ADVANCED TRAFFIC MITIGATION FOR I-95 VIADUCT AND BRANDYWINE RIVER BRIDGE**

CONTRACT	PERMIT NO.	<b>ND0201</b>
T201704105	DESIGNED BY:	K.M.K. (WRA)
COUNTY	CHECKED BY:	M.J.B. (WRA)
NEW CASTLE		

<b>WAVETRONIX PLAN</b>	SECTION
<b>NB SR 141 @</b>	WRA
<b>CENTERVILLE ROAD</b>	SHEET NO.
<b>ON-RAMP</b>	1

MATCH LINE - SEE SHEET 1



LEGEND			
	PROPOSED POLE BASE IDENTIFIER		PROPOSED MICROWAVE DETECTION DEVICE WITH POLE MOUNTED CONTROL CABINET
	PROPOSED CABINET IDENTIFIER		EXISTING UTILITY POLE
	PROPOSED JUNCTION WELL IDENTIFIER (TYPE OF JUNCTION WELL)		PROPOSED JUNCTION WELL
	PROPOSED CONDUIT RUN IDENTIFIER (1" OF CONDUIT RUN)		PROPOSED DISCONNECT SWITCH
	EXISTING JUNCTION WELL IDENTIFIER (TYPE OF JUNCTION WELL)		EXISTING SERVICE PEDESTAL
	EXISTING SIGNAL CABINET IDENTIFIER		EXISTING SIGNAL CABINET
	EXISTING CONDUIT RUN IDENTIFIER (1" OF CONDUIT RUN)		EXISTING JUNCTION WELL

CONDUIT RUN SCHEDULE					
CO#	# OF CONDUITS	SIZE	LENGTH	B/T/O	AMOUNT AND TYPE OF CABLE/ WIRE
8	1	4.0 IN	126 FT***	B	EMPTY
9	1	3.0 IN	16 FT	T	EMPTY
10*	1	2.0 IN	5 FT	-	EX. (1) 2/*8 U.F. W/GROUND - LINE SIDE
11**	1	2.0 IN	10 FT	T	[NEW (1) 2/*8 U.F. W/GROUND - LOAD SIDE]
12	1	4.0 IN	218 FT	T	[NEW (1) 2/*8 U.F. W/GROUND - LOAD SIDE]
13	1	4.0 IN	200 FT	T	[NEW (1) 2/*8 U.F. W/GROUND - LOAD SIDE]
14**	1	2.0 IN	9 FT	T	[NEW (1) 2/*8 U.F. W/GROUND - LOAD SIDE]
15**	1	2.0 IN	8 FT	T	[NEW (1) 2/*8 U.F. W/GROUND - LOAD SIDE]
16	1	3.0 IN	13 FT	T	[NEW (1) 2/*8 U.F. W/GROUND - LOAD SIDE]

\* DENOTES EXISTING CONDUIT  
 \*\* RIGID GALVANIZED STEEL CONDUIT  
 \*\*\* CONDUIT CONTINUED ON ADJACENT SHEET  
 B = BORE, T = TRENCH, O = OPEN CUT

- NOTES:**
- POWER FOR PROPOSED DETECTORS SHALL BE SUPPLIED BY EXISTING SERVICE PEDESTAL.
  - DETECTOR UNIT FACING SB SR 141 MOUNTED A MINIMUM MOUNTING HEIGHT OF 16' AND A MAXIMUM MOUNTING HEIGHT OF 32' WITH A MANUFACTURER RECOMMENDED MOUNTING HEIGHT OF 22'. DETECTOR UNIT FACING SB SR 141 OFF-RAMP TO NEWPORT GAP PIKE MOUNTED A MINIMUM MOUNTING HEIGHT OF 19' AND A MAXIMUM MOUNTING HEIGHT OF 39' WITH A MANUFACTURER RECOMMENDED MOUNTING HEIGHT OF 30'. FIELD ADJUST MOUNTING HEIGHTS AS REQUIRED TO ACHIEVE MAXIMUM DATA OUTPUT. DETECTORS WILL COMMUNICATE WITH THE TMC VIA A FIBER OPTIC INTERCONNECTION.
  - DIMENSIONS SHOWN ARE TO THE CENTER OF DETECTOR POLE BASE.
  - THE RIGHT-OF-WAY INFORMATION DEPICTED ON THIS PLAN IS BASED ON THE NEW CASTLE COUNTY TAX PARCEL MAP.
  - ALL UNDERGROUND AND OVERHEAD UTILITIES SHOWN ON THESE PLANS ARE SCHEMATIC ONLY AND MAY NOT BE COMPLETE. THE CONTRACTOR SHALL BE RESPONSIBLE FOR NOTIFYING MISS UTILITY, AND/OR THE APPROPRIATE UTILITY PRIOR TO THE BEGINNING OF CONSTRUCTION FOR THE UTILITY MARKOUTS. IF THE CONTRACTOR PERCEIVES THAT A CONFLICT BETWEEN UTILITIES AND THE TRAFFIC SIGNAL WILL OCCUR, THE CONTRACTOR SHALL NOTIFY DELDOT TRAFFIC IMMEDIATELY BEFORE CONSTRUCTION.
  - ALL CONDUIT SHALL BE SCHEDULE 80 PVC WHEN INSTALLED BY TRENCHING OR OPEN CUT AND HDPE SDR-13.5 WHEN INSTALLED BY BORING, UNLESS OTHERWISE NOTED.
  - THE CONTRACTOR SHALL CONTACT DENISE KSIAZEK (DELDOT) AT 302-981-6464 48 HOURS PRIOR TO THE INSTALLATION OF THE PROPOSED EMPTY CONDUITS TO COORDINATE THE FIBER OPTIC CONNECTION.

**NEW**

PREPARED BY  
 Whitman, Reardon and Associates, LLP  
 Engineers - Architects - Environmental Planners Est. 1915  
 Signature: [Handwritten Signature] DATE: 3/18/19  
 THIS SEAL APPLIES TO ALL SHEETS BEARING THE "WRA" SECTION DESIGNATION. SEAL

APPROVED FOR INSTALLATION  
 Signature: [Handwritten Signature] DATE: 3/19/19  
 CHIEF TRAFFIC ENGINEER

ADDENDA / REVISIONS



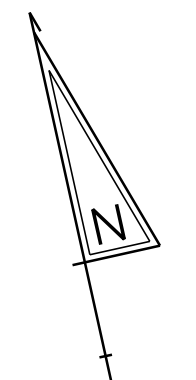
**ADVANCED TRAFFIC MITIGATION FOR I-95 VIADUCT AND BRANDYWINE RIVER BRIDGE**

CONTRACT	PERMIT NO.	<b>ND0202</b>
T201704105	DESIGNED BY:	K.M.K. (WRA)
COUNTY	CHECKED BY:	M.J.B. (WRA)
NEW CASTLE		

<b>WAVETRONIX PLAN</b>		SECTION
SB SR 141 @		WRA
BOXWOOD ROAD OFF-RAMP		SHEET NO.
		2

M:\31987-004\Contract\1-95\CADD\TIMS off alignment work ahead of viaduct\SG02\_14\Wave.dgn 3/18/2019 10:42:42 AM

MATCH LINE - SEE SHEET 4

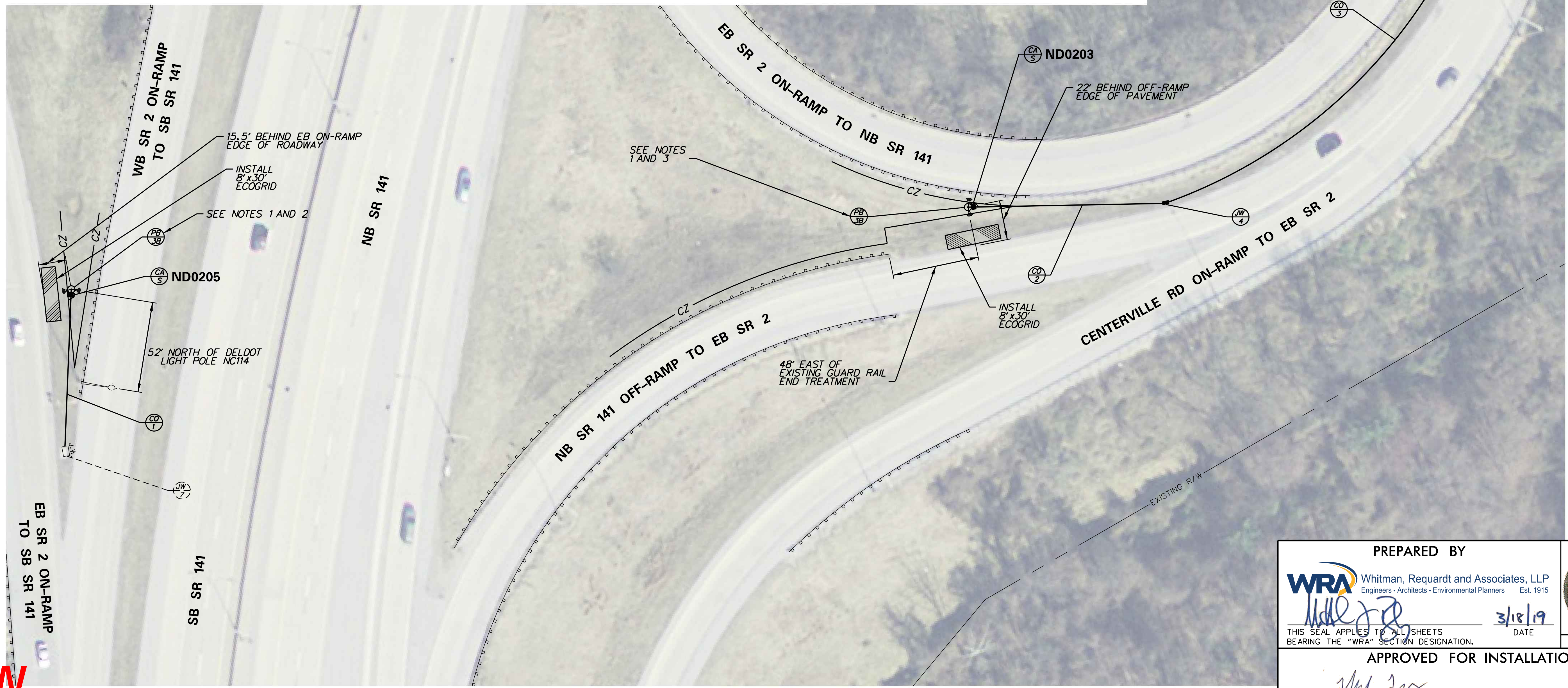


LEGEND			
	PROPOSED POLE BASE IDENTIFIER		EXISTING JUNCTION WELL
	PROPOSED SOLAR CABINET IDENTIFIER		EXISTING LUMINAIRE
	PROPOSED CONDUIT RUN IDENTIFIER (# OF CONDUIT RUN)		PROPOSED JUNCTION WELL
	PROPOSED JUNCTION WELL IDENTIFIER (TYPE OF JUNCTION WELL)		PROPOSED MICROWAVE DETECTION DEVICE WITH POLE MOUNTED CONTROL CABINET

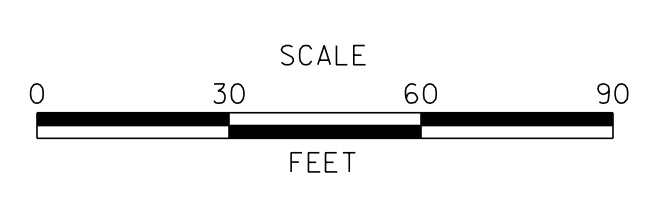
- NOTES:**
- POWER FOR PROPOSED DETECTORS SHALL BE SUPPLIED VIA SOLAR POWER WITH A BATTERY BACKUP. CONTRACTOR SHALL INSTALL SOLAR PANEL NEAR TOP OF PROPOSED DETECTOR POLES.
  - DETECTOR UNIT FACING WB SR 2 ON-RAMP TO SB SR 141 TO BE MOUNTED A MINIMUM MOUNTING HEIGHT OF 22' AND A MAXIMUM MOUNTING HEIGHT OF 38' WITH A MANUFACTURER RECOMMENDED MOUNTING HEIGHT OF 31'. DETECTOR UNIT FACING EB SR 2 ON-RAMP TO SB SR 141 TO BE MOUNTED A MINIMUM MOUNTING HEIGHT OF 15' AND A MAXIMUM MOUNTING HEIGHT OF 31' WITH A MANUFACTURER RECOMMENDED MOUNTING HEIGHT OF 19'. FIELD ADJUST MOUNTING HEIGHTS AS REQUIRED TO ACHIEVE MAXIMUM DATA OUTPUT. DETECTOR WILL COMMUNICATE WITH THE TMC VIA A FIBER OPTIC INTERCONNECTION.
  - DETECTOR UNIT FACING EB SR 2 ON-RAMP TO NB SR 141 TO BE MOUNTED A MINIMUM MOUNTING HEIGHT OF 14' AND A MAXIMUM MOUNTING HEIGHT OF 27' WITH A MANUFACTURER RECOMMENDED MOUNTING HEIGHT OF 17'. DETECTOR UNIT FACING NB SR 141 OFF-RAMP TO EB SR 2 TO BE MOUNTED A MINIMUM MOUNTING HEIGHT OF 21' AND A MAXIMUM MOUNTING HEIGHT OF 37' WITH A MANUFACTURER RECOMMENDED MOUNTING HEIGHT OF 29'. FIELD ADJUST MOUNTING HEIGHTS AS REQUIRED TO ACHIEVE MAXIMUM DATA OUTPUT. DETECTOR WILL COMMUNICATE WITH THE TMC VIA A FIBER OPTIC INTERCONNECTION.
  - DIMENSIONS SHOWN ARE TO THE CENTER OF DETECTOR POLE BASES.
  - THE RIGHT-OF-WAY INFORMATION DEPICTED ON THIS PLAN IS BASED ON THE NEW CASTLE COUNTY TAX PARCEL MAP.
  - ALL UNDERGROUND AND OVERHEAD UTILITIES SHOWN ON THESE PLANS ARE SCHEMATIC ONLY AND MAY NOT BE COMPLETE. THE CONTRACTOR SHALL BE RESPONSIBLE FOR NOTIFYING MISS UTILITY, AND/OR THE APPROPRIATE UTILITY PRIOR TO THE BEGINNING OF CONSTRUCTION FOR THE UTILITY MARKOUTS. IF THE CONTRACTOR PERCEIVES THAT A CONFLICT BETWEEN UTILITIES AND THE TRAFFIC SIGNAL WILL OCCUR, THE CONTRACTOR SHALL NOTIFY DELDOT TRAFFIC IMMEDIATELY BEFORE CONSTRUCTION.
  - ALL CONDUIT SHALL BE SCHEDULE 80 PVC WHEN INSTALLED BY TRENCHING OR OPEN CUT AND HDPE SDR-13.5 WHEN INSTALLED BY BORING, UNLESS OTHERWISE NOTED.
  - THE CONTRACTOR SHALL CONTACT DENISE KSIAZEK (DELDOT) AT 302-981-6464 48 HOURS PRIOR TO THE INSTALLATION OF THE PROPOSED EMPTY CONDUITS TO COORDINATE THE FIBER OPTIC CONNECTION.

CONDUIT RUN SCHEDULE					
CO#	# OF CONDUITS	SIZE	LENGTH	B/T/O	AMOUNT AND TYPE OF CABLE/ WIRE
1	1	3.0 IN	88 FT	T	EMPTY
2	1	3.0 IN	109 FT	T	EMPTY
3	1	4.0 IN	308 FT	T	EMPTY
4	1	4.0 IN	316 FT*	T	EMPTY

\* CONDUIT CONTINUED ON ADJACENT SHEET      B = BORE, T = TRENCH, O = OPEN CUT



<b>PREPARED BY</b>  Whitman, Reardon and Associates, LLP Engineers - Architects - Environmental Planners Est. 1915  DATE: 3/18/19		 SEAL
<b>APPROVED FOR INSTALLATION</b>  DATE: 3/19/19 CHIEF TRAFFIC ENGINEER		



**ADVANCED TRAFFIC MITIGATION  
FOR I-95 VIADUCT AND  
BRANDYWINE RIVER BRIDGE**

CONTRACT	PERMIT NO.	ND0203, ND0205
T201704105	DESIGNED BY:	K.M.K. (WRA)
COUNTY	CHECKED BY:	M.J.B. (WRA)
NEW CASTLE		

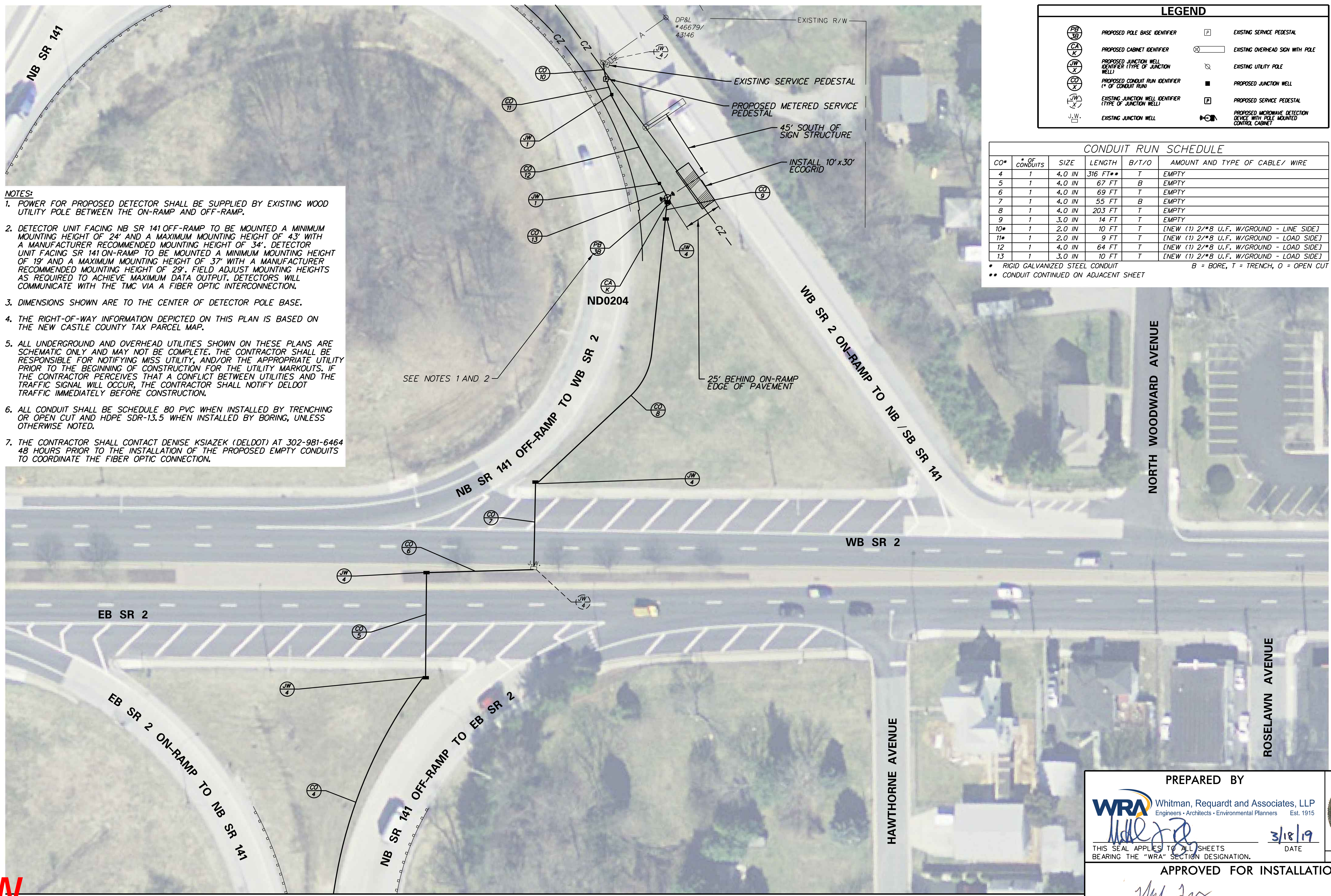
<b>WAVETRONIX PLAN SR 141 @ SR 2 INTERCHANGE</b>		SECTION
		WRA
		SHEET NO.
		3

M:\3987-004\Contract\1-95\CADD\ITEMS off alignment work ahead of viaduct\SC03\_14\Wave.dgn  
 3/19/2019 10:52:27 AM

**NEW**

ADDENDA / REVISIONS

M:\31987-004\Contract\1-95\CADD\ITEMS off alignment work ahead of viaduct\SC04\_14\Wave.dgn 3/19/19 10:28:00 AM



LEGEND			
	PROPOSED POLE BASE IDENTIFIER		EXISTING SERVICE PEDESTAL
	PROPOSED CABINET IDENTIFIER		EXISTING OVERHEAD SIGN WITH POLE
	PROPOSED JUNCTION WELL IDENTIFIER (TYPE OF JUNCTION WELL)		EXISTING UTILITY POLE
	PROPOSED CONDUIT RUN IDENTIFIER (# OF CONDUIT RUN)		PROPOSED JUNCTION WELL
	EXISTING JUNCTION WELL IDENTIFIER (TYPE OF JUNCTION WELL)		PROPOSED SERVICE PEDESTAL
	EXISTING JUNCTION WELL		PROPOSED MICROWAVE DETECTION DEVICE WITH POLE MOUNTED CONTROL CABINET

CONDUIT RUN SCHEDULE					
CO#	# OF CONDUITS	SIZE	LENGTH	B/T/O	AMOUNT AND TYPE OF CABLE/ WIRE
4	1	4.0 IN	316 FT**	T	EMPTY
5	1	4.0 IN	67 FT	B	EMPTY
6	1	4.0 IN	69 FT	T	EMPTY
7	1	4.0 IN	55 FT	B	EMPTY
8	1	4.0 IN	203 FT	T	EMPTY
9	1	3.0 IN	14 FT	T	EMPTY
10*	1	2.0 IN	10 FT	T	[NEW (1) 2/*8 U.F. W/GROUND - LINE SIDE]
11*	1	2.0 IN	9 FT	T	[NEW (1) 2/*8 U.F. W/GROUND - LOAD SIDE]
12	1	4.0 IN	64 FT	T	[NEW (1) 2/*8 U.F. W/GROUND - LOAD SIDE]
13	1	3.0 IN	10 FT	T	[NEW (1) 2/*8 U.F. W/GROUND - LOAD SIDE]

\* RIGID GALVANIZED STEEL CONDUIT  
 \*\* CONDUIT CONTINUED ON ADJACENT SHEET  
 B = BORE, T = TRENCH, O = OPEN CUT

- NOTES:**
- POWER FOR PROPOSED DETECTOR SHALL BE SUPPLIED BY EXISTING WOOD UTILITY POLE BETWEEN THE ON-RAMP AND OFF-RAMP.
  - DETECTOR UNIT FACING NB SR 141 OFF-RAMP TO BE MOUNTED A MINIMUM MOUNTING HEIGHT OF 24' AND A MAXIMUM MOUNTING HEIGHT OF 43' WITH A MANUFACTURER RECOMMENDED MOUNTING HEIGHT OF 34'. DETECTOR UNIT FACING SR 141 ON-RAMP TO BE MOUNTED A MINIMUM MOUNTING HEIGHT OF 19' AND A MAXIMUM MOUNTING HEIGHT OF 37' WITH A MANUFACTURER RECOMMENDED MOUNTING HEIGHT OF 29'. FIELD ADJUST MOUNTING HEIGHTS AS REQUIRED TO ACHIEVE MAXIMUM DATA OUTPUT. DETECTORS WILL COMMUNICATE WITH THE TMC VIA A FIBER OPTIC INTERCONNECTION.
  - DIMENSIONS SHOWN ARE TO THE CENTER OF DETECTOR POLE BASE.
  - THE RIGHT-OF-WAY INFORMATION DEPICTED ON THIS PLAN IS BASED ON THE NEW CASTLE COUNTY TAX PARCEL MAP.
  - ALL UNDERGROUND AND OVERHEAD UTILITIES SHOWN ON THESE PLANS ARE SCHEMATIC ONLY AND MAY NOT BE COMPLETE. THE CONTRACTOR SHALL BE RESPONSIBLE FOR NOTIFYING MISS UTILITY, AND/OR THE APPROPRIATE UTILITY PRIOR TO THE BEGINNING OF CONSTRUCTION FOR THE UTILITY MARKOUTS. IF THE CONTRACTOR PERCEIVES THAT A CONFLICT BETWEEN UTILITIES AND THE TRAFFIC SIGNAL WILL OCCUR, THE CONTRACTOR SHALL NOTIFY DELDOT TRAFFIC IMMEDIATELY BEFORE CONSTRUCTION.
  - ALL CONDUIT SHALL BE SCHEDULE 80 PVC WHEN INSTALLED BY TRENCHING OR OPEN CUT AND HDPE SDR-13.5 WHEN INSTALLED BY BORING, UNLESS OTHERWISE NOTED.
  - THE CONTRACTOR SHALL CONTACT DENISE KSIAZEK (DELDOT) AT 302-981-6464 48 HOURS PRIOR TO THE INSTALLATION OF THE PROPOSED EMPTY CONDUITS TO COORDINATE THE FIBER OPTIC CONNECTION.

**NEW**

MATCH LINE - SEE SHEET 3



**ADVANCED TRAFFIC MITIGATION FOR I-95 VIADUCT AND BRANDYWINE RIVER BRIDGE**

CONTRACT	PERMIT NO.	<b>ND0204</b>
T201704105	DESIGNED BY:	K.M.K. (WRA)
COUNTY	CHECKED BY:	M.J.B. (WRA)
NEW CASTLE		

**WAVETRONIX PLAN WB SR 2 @ SR 141 INTERCHANGE**

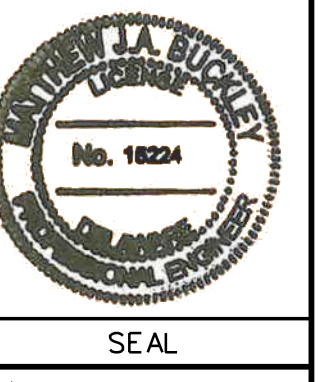
SECTION	WRA
SHEET NO.	4

PREPARED BY

Whitman, Reardon and Associates, LLP  
 Engineers - Architects - Environmental Planners Est. 1915

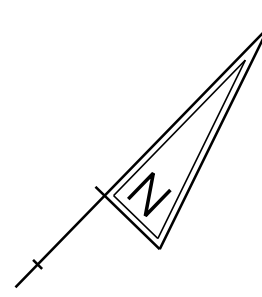
*[Signature]* 3/18/19  
 DATE

THIS SEAL APPLIES TO ALL SHEETS BEARING THE "WRA" SECTION DESIGNATION.



APPROVED FOR INSTALLATION

*[Signature]* 3/19/19  
 CHIEF TRAFFIC ENGINEER DATE



**NOTES:**

- POWER FOR PROPOSED DETECTORS SHALL BE SUPPLIED VIA SOLAR POWER WITH A BATTERY BACKUP. CONTRACTOR SHALL INSTALL SOLAR PANEL NEAR TOP OF PROPOSED DETECTOR POLES.
- DETECTOR UNIT FACING SB SR 52 ON-RAMP TO SB SR 141 TO BE MOUNTED A MINIMUM MOUNTING HEIGHT OF 21' AND A MAXIMUM MOUNTING HEIGHT OF 35' WITH A MANUFACTURER RECOMMENDED MOUNTING HEIGHT OF 23'. DETECTOR UNIT FACING SB SR 141 TO BE MOUNTED A MINIMUM MOUNTING HEIGHT OF 10' AND A MAXIMUM MOUNTING HEIGHT OF 24' WITH A MANUFACTURER RECOMMENDED MOUNTING HEIGHT OF 13'. FIELD ADJUST MOUNTING HEIGHTS AS REQUIRED TO ACHIEVE MAXIMUM DATA OUTPUT. DETECTORS WILL COMMUNICATE WITH THE TMC VIA A FIBER OPTIC INTERCONNECTION.
- DETECTOR UNIT FACING NB SR 141 OFF-RAMP TO SB SR 52 TO BE MOUNTED A MINIMUM MOUNTING HEIGHT OF 30' AND A MAXIMUM MOUNTING HEIGHT OF 50' WITH A MANUFACTURER RECOMMENDED MOUNTING HEIGHT OF 41'. DETECTOR UNIT FACING NB SR 141 TO BE MOUNTED A MINIMUM MOUNTING HEIGHT OF 17' AND A MAXIMUM MOUNTING HEIGHT OF 33' WITH A MANUFACTURER RECOMMENDED MOUNTING HEIGHT OF 26'. FIELD ADJUST MOUNTING HEIGHTS AS REQUIRED TO ACHIEVE MAXIMUM DATA OUTPUT. DETECTORS WILL COMMUNICATE WITH THE TMC VIA A FIBER OPTIC INTERCONNECTION.
- DIMENSIONS SHOWN ARE TO THE CENTER OF DETECTOR POLE BASES.
- THE RIGHT-OF-WAY INFORMATION DEPICTED ON THIS PLAN IS BASED ON THE NEW CASTLE COUNTY TAX PARCEL MAP.
- ALL UNDERGROUND AND OVERHEAD UTILITIES SHOWN ON THESE PLANS ARE SCHEMATIC ONLY AND MAY NOT BE COMPLETE. THE CONTRACTOR SHALL BE RESPONSIBLE FOR NOTIFYING MISS UTILITY, AND/OR THE APPROPRIATE UTILITY PRIOR TO THE BEGINNING OF CONSTRUCTION FOR THE UTILITY MARKOUTS. IF THE CONTRACTOR PERCEIVES THAT A CONFLICT BETWEEN UTILITIES AND THE TRAFFIC SIGNAL WILL OCCUR, THE CONTRACTOR SHALL NOTIFY DELDOT IMMEDIATELY BEFORE CONSTRUCTION.
- ALL CONDUIT SHALL BE SCHEDULE 80 PVC WHEN INSTALLED BY TRENCHING OR OPEN CUT AND HDPE SDR-13.5 WHEN INSTALLED BY BORING, UNLESS OTHERWISE NOTED.
- THE CONTRACTOR SHALL CONTACT DENISE KSIAZEK (DELDOT) AT 302-981-6464 48 HOURS PRIOR TO THE INSTALLATION OF THE PROPOSED EMPTY CONDUITS TO COORDINATE THE FIBER OPTIC CONNECTION.



LEGEND			
	PROPOSED POLE BASE IDENTIFIER		PROPOSED MICROWAVE DETECTION DEVICE WITH POLE MOUNTED CONTROL CABINET
	PROPOSED SOLAR CABINET IDENTIFIER		EXISTING TREE
	PROPOSED CONDUIT RUN IDENTIFIER (# OF CONDUIT RUN)		EXISTING DRAINAGE INLET
	PROPOSED JUNCTION WELL IDENTIFIER (TYPE OF JUNCTION WELL)		PROPOSED JUNCTION WELL
	EXISTING JUNCTION WELL IDENTIFIER (TYPE OF JUNCTION WELL)		EXISTING JUNCTION WELL

CONDUIT RUN SCHEDULE					
CO#	# OF CONDUITS	SIZE	LENGTH	B/T/O	AMOUNT AND TYPE OF CABLE/ WIRE
1	1	3.0 IN	21 FT	T	EMPTY
2	1	4.0 IN	121 FT	B	EMPTY
3	1	3.0 IN	61 FT	T	EMPTY

B = BORE, T = TRENCH, O = OPEN CUT



**NEW**

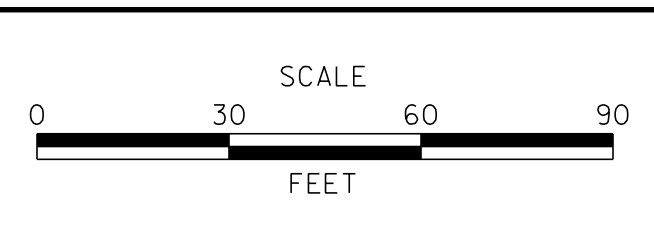
M:\31987-004\Contract\1-95\CADD\TMS off alignment work ahead of viaduct\SC05\_14\Wave.dgn 3/18/19 10:27:43 AM

PREPARED BY  
 Whitman, Reardon and Associates, LLP  
 Engineers - Architects - Environmental Planners Est. 1915  
 Signature: [Handwritten Signature] DATE: 3/18/19  
 THIS SEAL APPLIES TO ALL SHEETS BEARING THE "WRA" SECTION DESIGNATION.



APPROVED FOR INSTALLATION  
 Signature: [Handwritten Signature] DATE: 3/19/19  
 CHIEF TRAFFIC ENGINEER

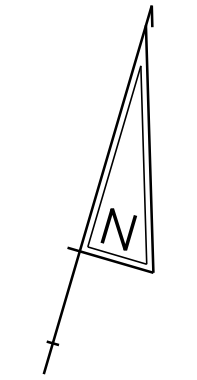
ADDENDA / REVISIONS



**ADVANCED TRAFFIC MITIGATION  
 FOR I-95 VIADUCT AND  
 BRANDYWINE RIVER BRIDGE**

CONTRACT	PERMIT NO.	ND0206, ND0207
T201704105	DESIGNED BY:	K.M.K. (WRA)
COUNTY	CHECKED BY:	M.J.B. (WRA)
NEW CASTLE		

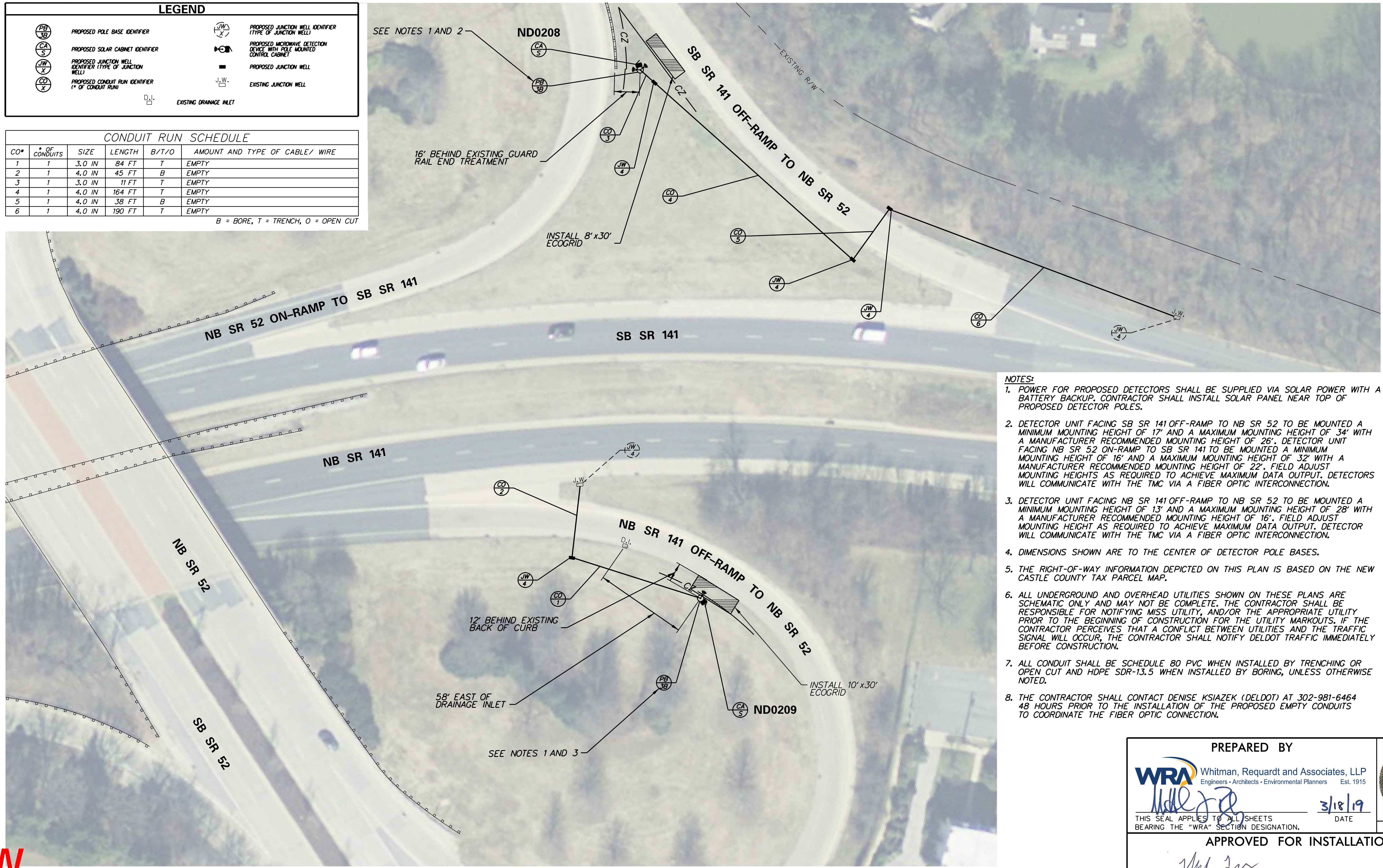
<b>WAVETRONIX PLAN</b>	SECTION
<b>SR 141 @</b>	WRA
<b>SB SR 52 RAMPS</b>	SHEET NO.
	5



LEGEND			
	PROPOSED POLE BASE IDENTIFIER		PROPOSED JUNCTION WELL IDENTIFIER (TYPE OF JUNCTION WELL)
	PROPOSED SOLAR CABINET IDENTIFIER		PROPOSED MICROWAVE DETECTION DEVICE WITH POLE MOUNTED CONTROL CABINET
	PROPOSED JUNCTION WELL IDENTIFIER (TYPE OF JUNCTION WELL)		PROPOSED JUNCTION WELL
	PROPOSED CONDUIT RUN IDENTIFIER (# OF CONDUIT RUN)		EXISTING JUNCTION WELL
	EXISTING DRAINAGE INLET		

CONDUIT RUN SCHEDULE					
CO#	# OF CONDUITS	SIZE	LENGTH	B/T/O	AMOUNT AND TYPE OF CABLE/ WIRE
1	1	3.0 IN	84 FT	T	EMPTY
2	1	4.0 IN	45 FT	B	EMPTY
3	1	3.0 IN	11 FT	T	EMPTY
4	1	4.0 IN	164 FT	T	EMPTY
5	1	4.0 IN	38 FT	B	EMPTY
6	1	4.0 IN	190 FT	T	EMPTY

B = BORE, T = TRENCH, O = OPEN CUT



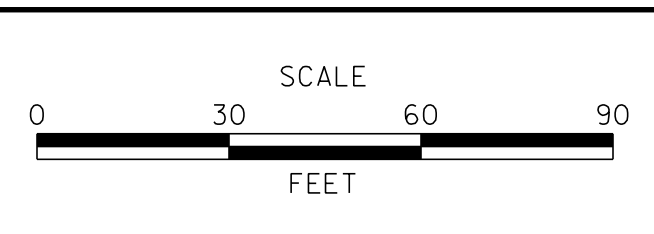
- NOTES:**
- POWER FOR PROPOSED DETECTORS SHALL BE SUPPLIED VIA SOLAR POWER WITH A BATTERY BACKUP. CONTRACTOR SHALL INSTALL SOLAR PANEL NEAR TOP OF PROPOSED DETECTOR POLES.
  - DETECTOR UNIT FACING SB SR 141 OFF-RAMP TO NB SR 52 TO BE MOUNTED A MINIMUM MOUNTING HEIGHT OF 17' AND A MAXIMUM MOUNTING HEIGHT OF 34' WITH A MANUFACTURER RECOMMENDED MOUNTING HEIGHT OF 26'. DETECTOR UNIT FACING NB SR 52 ON-RAMP TO SB SR 141 TO BE MOUNTED A MINIMUM MOUNTING HEIGHT OF 16' AND A MAXIMUM MOUNTING HEIGHT OF 32' WITH A MANUFACTURER RECOMMENDED MOUNTING HEIGHT OF 22'. FIELD ADJUST MOUNTING HEIGHTS AS REQUIRED TO ACHIEVE MAXIMUM DATA OUTPUT. DETECTOR WILL COMMUNICATE WITH THE TMC VIA A FIBER OPTIC INTERCONNECTION.
  - DETECTOR UNIT FACING NB SR 141 OFF-RAMP TO NB SR 52 TO BE MOUNTED A MINIMUM MOUNTING HEIGHT OF 13' AND A MAXIMUM MOUNTING HEIGHT OF 28' WITH A MANUFACTURER RECOMMENDED MOUNTING HEIGHT OF 16'. FIELD ADJUST MOUNTING HEIGHT AS REQUIRED TO ACHIEVE MAXIMUM DATA OUTPUT. DETECTOR WILL COMMUNICATE WITH THE TMC VIA A FIBER OPTIC INTERCONNECTION.
  - DIMENSIONS SHOWN ARE TO THE CENTER OF DETECTOR POLE BASES.
  - THE RIGHT-OF-WAY INFORMATION DEPICTED ON THIS PLAN IS BASED ON THE NEW CASTLE COUNTY TAX PARCEL MAP.
  - ALL UNDERGROUND AND OVERHEAD UTILITIES SHOWN ON THESE PLANS ARE SCHEMATIC ONLY AND MAY NOT BE COMPLETE. THE CONTRACTOR SHALL BE RESPONSIBLE FOR NOTIFYING MISS UTILITY, AND/OR THE APPROPRIATE UTILITY PRIOR TO THE BEGINNING OF CONSTRUCTION FOR THE UTILITY MARKOUTS. IF THE CONTRACTOR PERCEIVES THAT A CONFLICT BETWEEN UTILITIES AND THE TRAFFIC SIGNAL WILL OCCUR, THE CONTRACTOR SHALL NOTIFY DELDOT TRAFFIC IMMEDIATELY BEFORE CONSTRUCTION.
  - ALL CONDUIT SHALL BE SCHEDULE 80 PVC WHEN INSTALLED BY TRENCHING OR OPEN CUT AND HDPE SDR-13.5 WHEN INSTALLED BY BORING, UNLESS OTHERWISE NOTED.
  - THE CONTRACTOR SHALL CONTACT DENISE KSIAZEK (DELDOT) AT 302-981-6464 48 HOURS PRIOR TO THE INSTALLATION OF THE PROPOSED EMPTY CONDUITS TO COORDINATE THE FIBER OPTIC CONNECTION.

M:\31987-004\31987-004.ctb\1-95\CADD\ITEMS off alignment work ahead of viaduct\SC06-14\Wave.dgn 3/19/19 9:52:29 AM

**NEW**

PREPARED BY		
Whitman, Reardon and Associates, LLP Engineers - Architects - Environmental Planners Est. 1915 <i>[Signature]</i>	3/18/19 DATE	
THIS SEAL APPLIES TO ALL SHEETS BEARING THE "WRA" SECTION DESIGNATION.		
APPROVED FOR INSTALLATION		
 CHIEF TRAFFIC ENGINEER	3/19/19 DATE	

ADDENDA / REVISIONS



**ADVANCED TRAFFIC MITIGATION FOR I-95 VIADUCT AND BRANDYWINE RIVER BRIDGE**

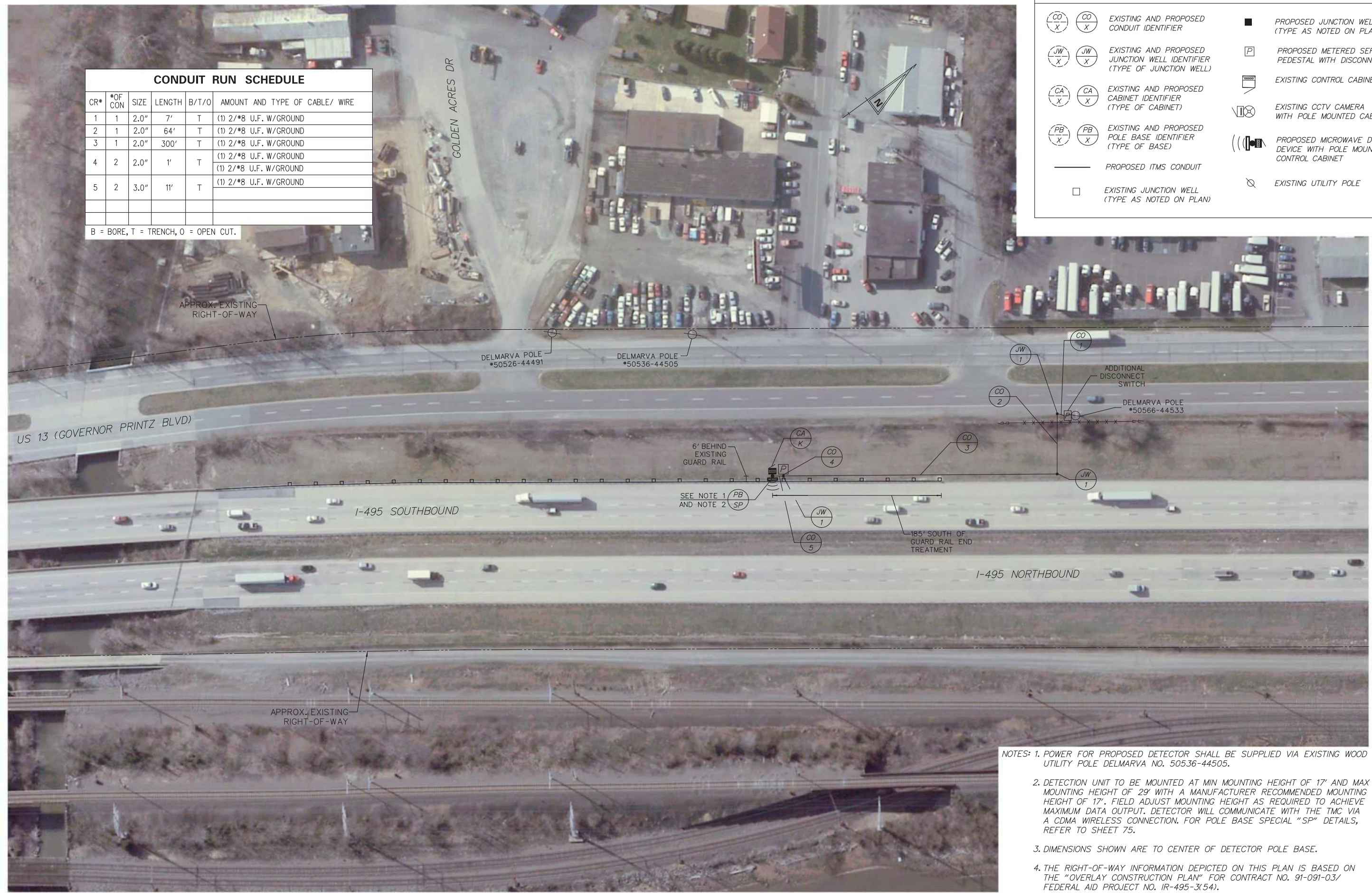
CONTRACT	PERMIT NO.	ND0208, ND0209
T201704105	DESIGNED BY:	K.M.K. (WRA)
COUNTY	CHECKED BY:	M.J.B. (WRA)
NEW CASTLE		

<b>WAVETRONIX PLAN</b>	SECTION
<b>SR 141 @</b>	WRA
<b>NB SR 52 RAMPS</b>	SHEET NO.
	6

CONDUIT RUN SCHEDULE					
CR#	# OF CON	SIZE	LENGTH	B/T/O	AMOUNT AND TYPE OF CABLE/ WIRE
1	1	2.0"	7'	T	(1) 2/*8 U.F. W/GROUND
2	1	2.0"	64'	T	(1) 2/*8 U.F. W/GROUND
3	1	2.0"	300'	T	(1) 2/*8 U.F. W/GROUND
4	2	2.0"	1'	T	(1) 2/*8 U.F. W/GROUND (1) 2/*8 U.F. W/GROUND
5	2	3.0"	11'	T	(1) 2/*8 U.F. W/GROUND

B = BORE, T = TRENCH, O = OPEN CUT.

LEGEND	
	EXISTING AND PROPOSED CONDUIT IDENTIFIER
	EXISTING AND PROPOSED JUNCTION WELL IDENTIFIER (TYPE OF JUNCTION WELL)
	EXISTING AND PROPOSED CABINET IDENTIFIER (TYPE OF CABINET)
	EXISTING AND PROPOSED POLE BASE IDENTIFIER (TYPE OF BASE)
	PROPOSED ITMS CONDUIT
	EXISTING JUNCTION WELL (TYPE AS NOTED ON PLAN)
	PROPOSED JUNCTION WELL (TYPE AS NOTED ON PLAN)
	PROPOSED METERED SERVICE PEDESTAL WITH DISCONNECT SWITCH
	EXISTING CONTROL CABINET
	EXISTING CCTV CAMERA WITH POLE MOUNTED CABINET
	PROPOSED MICROWAVE DETECTION DEVICE WITH POLE MOUNTED CONTROL CABINET
	EXISTING UTILITY POLE

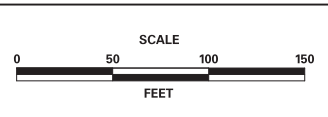


- NOTES: 1. POWER FOR PROPOSED DETECTOR SHALL BE SUPPLIED VIA EXISTING WOOD UTILITY POLE DELMARVA NO. 50536-44505.
2. DETECTION UNIT TO BE MOUNTED AT MIN MOUNTING HEIGHT OF 17' AND MAX MOUNTING HEIGHT OF 29' WITH A MANUFACTURER RECOMMENDED MOUNTING HEIGHT OF 17'. FIELD ADJUST MOUNTING HEIGHT AS REQUIRED TO ACHIEVE MAXIMUM DATA OUTPUT. DETECTOR WILL COMMUNICATE WITH THE TMC VIA A CDMA WIRELESS CONNECTION. FOR POLE BASE SPECIAL "SP" DETAILS, REFER TO SHEET 75.
3. DIMENSIONS SHOWN ARE TO CENTER OF DETECTOR POLE BASE.
4. THE RIGHT-OF-WAY INFORMATION DEPICTED ON THIS PLAN IS BASED ON THE "OVERLAY CONSTRUCTION PLAN" FOR CONTRACT NO. 91-091-03/ FEDERAL AID PROJECT NO. IR-495-3(54).

9/12/2012 2:44:28 PM \\RRKMA\2010\10028\_DELDOT\ITS\TASK 2 - I-495\_SPEED DETECTION\_SITES\CADD\PLANS\CPI5\_1495-AS\_BUILT.DGN



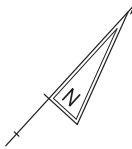
ADDENDUMS / REVISIONS	



**FREWAY DETECTION INSTALLATION PROJECT**

CONTRACT	DETECTOR NO.	ND0138
T201204701	DESIGNED BY:	SM
COUNTY	CHECKED BY:	JCR
NEW CASTLE		

<b>SITE #16</b>	SHEET NO.	17
	TOTAL SHTS.	75



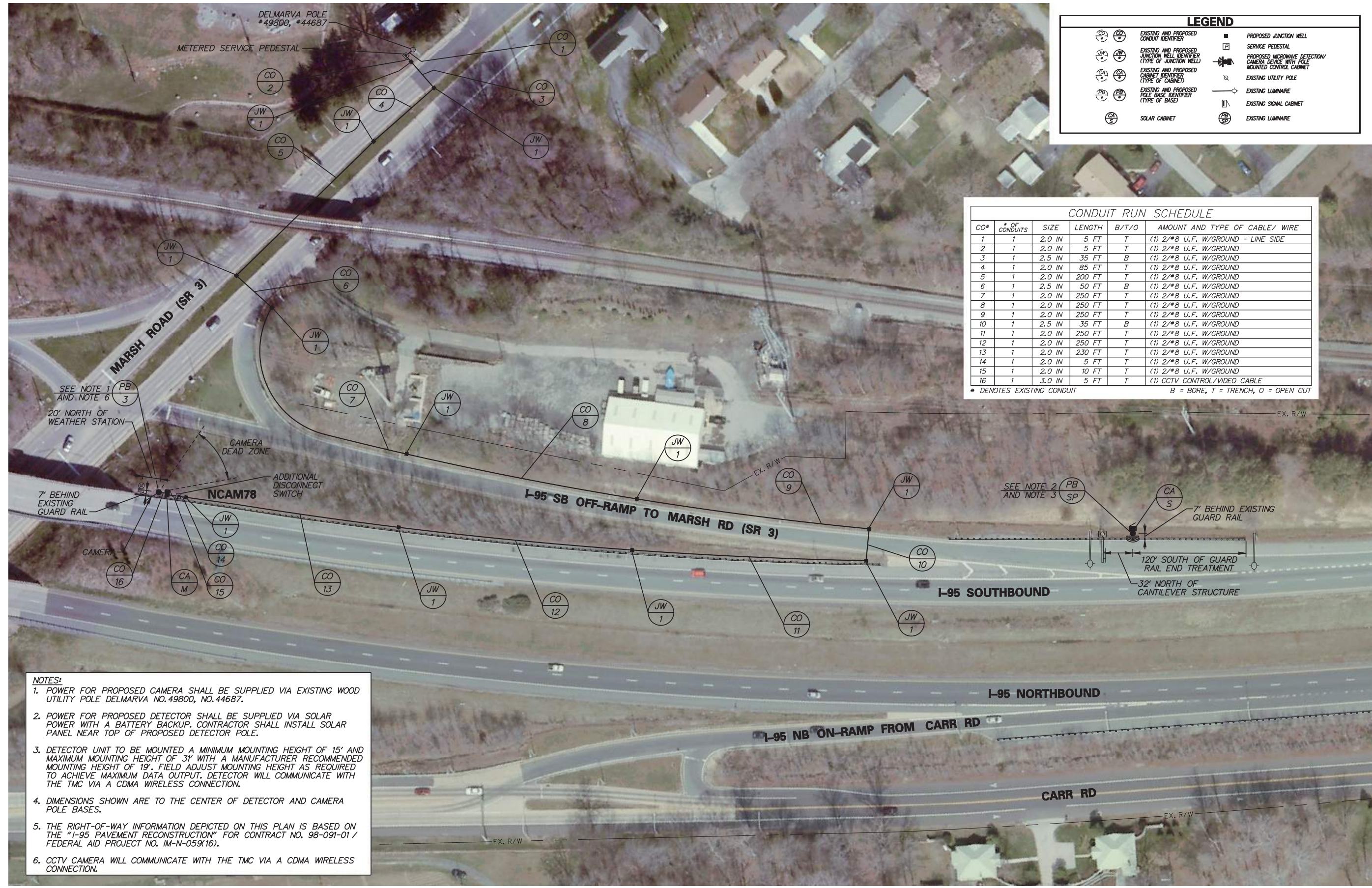
**LEGEND**

	EXISTING AND PROPOSED CONDUIT IDENTIFIER		PROPOSED JUNCTION WELL
	EXISTING AND PROPOSED JUNCTION WELL IDENTIFIER (TYPE OF JUNCTION WELL)		SERVICE PEDESTAL
	EXISTING AND PROPOSED CABINET IDENTIFIER (TYPE OF CABINET)		PROPOSED MICROWAVE DETECTION CAMERA DEVICE WITH POLE MOUNTED CONTROL CABINET
	EXISTING AND PROPOSED POLE BASE IDENTIFIER (TYPE OF BASE)		EXISTING UTILITY POLE
	SOLAR CABINET		EXISTING LUMINAIRE
			EXISTING SIGNAL CABINET
			EXISTING LUMINAIRE

**CONDUIT RUN SCHEDULE**

CO#	* OF CONDUITS	SIZE	LENGTH	B/T/O	AMOUNT AND TYPE OF CABLE/ WIRE
1	1	2.0 IN	5 FT	T	(1) 2/*8 U.F. W/GROUND - LINE SIDE
2	1	2.0 IN	5 FT	T	(1) 2/*8 U.F. W/GROUND
3	1	2.5 IN	35 FT	B	(1) 2/*8 U.F. W/GROUND
4	1	2.0 IN	85 FT	T	(1) 2/*8 U.F. W/GROUND
5	1	2.0 IN	200 FT	T	(1) 2/*8 U.F. W/GROUND
6	1	2.5 IN	50 FT	B	(1) 2/*8 U.F. W/GROUND
7	1	2.0 IN	250 FT	T	(1) 2/*8 U.F. W/GROUND
8	1	2.0 IN	250 FT	T	(1) 2/*8 U.F. W/GROUND
9	1	2.0 IN	250 FT	T	(1) 2/*8 U.F. W/GROUND
10	1	2.5 IN	35 FT	B	(1) 2/*8 U.F. W/GROUND
11	1	2.0 IN	250 FT	T	(1) 2/*8 U.F. W/GROUND
12	1	2.0 IN	250 FT	T	(1) 2/*8 U.F. W/GROUND
13	1	2.0 IN	230 FT	T	(1) 2/*8 U.F. W/GROUND
14	1	2.0 IN	5 FT	T	(1) 2/*8 U.F. W/GROUND
15	1	2.0 IN	10 FT	T	(1) 2/*8 U.F. W/GROUND
16	1	3.0 IN	5 FT	T	(1) CCTV CONTROL/VIDEO CABLE

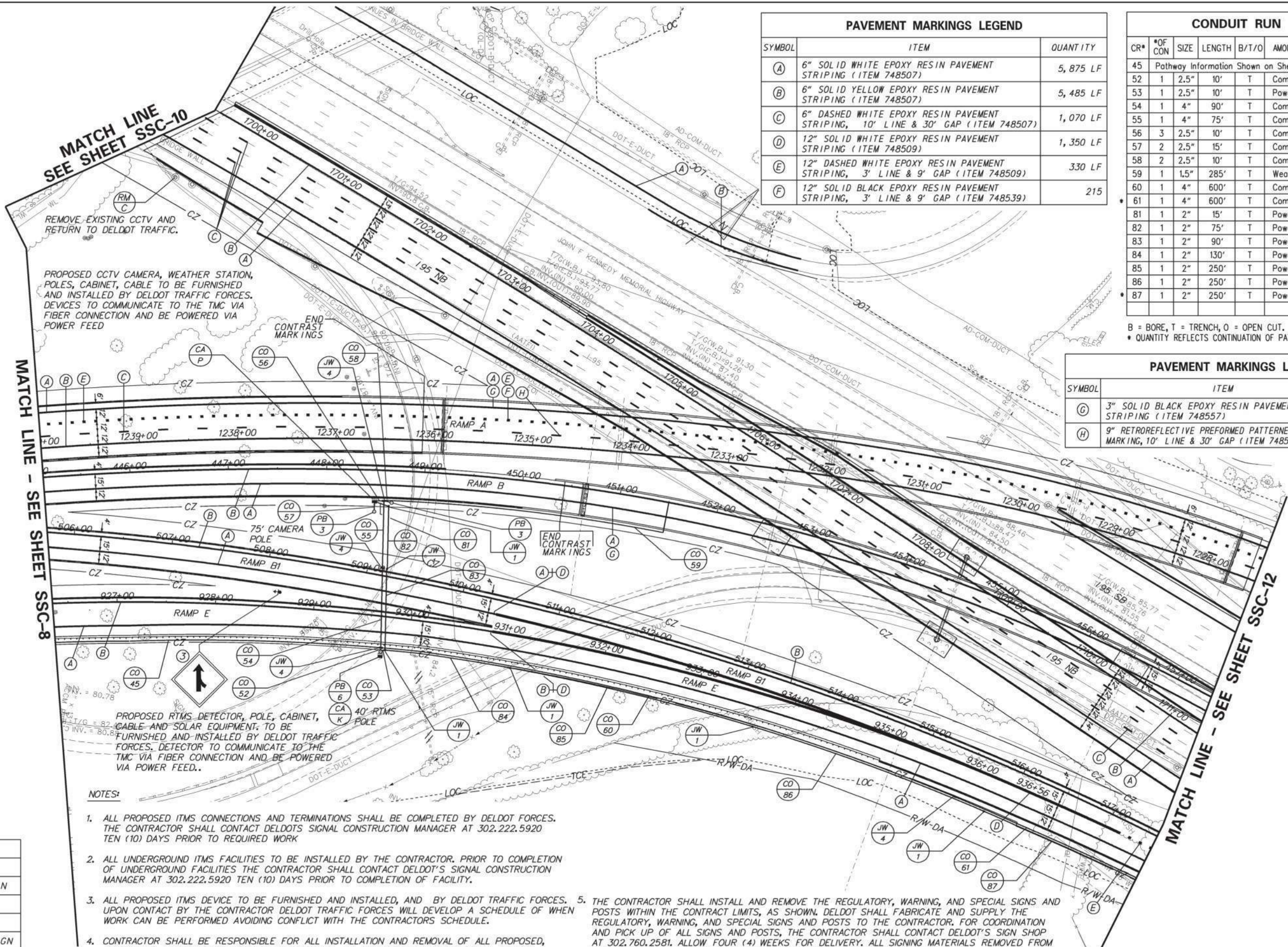
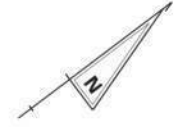
\* DENOTES EXISTING CONDUIT      B = BORE, T = TRENCH, O = OPEN CUT



- NOTES:**
- POWER FOR PROPOSED CAMERA SHALL BE SUPPLIED VIA EXISTING WOOD UTILITY POLE DELMARVA NO.49800, NO.44687.
  - POWER FOR PROPOSED DETECTOR SHALL BE SUPPLIED VIA SOLAR POWER WITH A BATTERY BACKUP. CONTRACTOR SHALL INSTALL SOLAR PANEL NEAR TOP OF PROPOSED DETECTOR POLE.
  - DETECTOR UNIT TO BE MOUNTED A MINIMUM MOUNTING HEIGHT OF 15' AND MAXIMUM MOUNTING HEIGHT OF 31' WITH A MANUFACTURER RECOMMENDED MOUNTING HEIGHT OF 19'. FIELD ADJUST MOUNTING HEIGHT AS REQUIRED TO ACHIEVE MAXIMUM DATA OUTPUT. DETECTOR WILL COMMUNICATE WITH THE TMC VIA A CDMA WIRELESS CONNECTION.
  - DIMENSIONS SHOWN ARE TO THE CENTER OF DETECTOR AND CAMERA POLE BASES.
  - THE RIGHT-OF-WAY INFORMATION DEPICTED ON THIS PLAN IS BASED ON THE "I-95 PAVEMENT RECONSTRUCTION" FOR CONTRACT NO. 98-091-01 / FEDERAL AID PROJECT NO. IM-N-059(16).
  - CCTV CAMERA WILL COMMUNICATE WITH THE TMC VIA A CDMA WIRELESS CONNECTION.

N:\31758-007\34493\SITEH\TMS\_195.dgn  
 11/30/2011 7:59:58 AM





PAVEMENT MARKINGS LEGEND		
SYMBOL	ITEM	QUANTITY
(A)	6" SOLID WHITE EPOXY RESIN PAVEMENT STRIPING (ITEM 748507)	5,875 LF
(B)	6" SOLID YELLOW EPOXY RESIN PAVEMENT STRIPING (ITEM 748507)	5,485 LF
(C)	6" DASHED WHITE EPOXY RESIN PAVEMENT STRIPING, 10' LINE & 30' GAP (ITEM 748507)	1,070 LF
(D)	12" SOLID WHITE EPOXY RESIN PAVEMENT STRIPING (ITEM 748509)	1,350 LF
(E)	12" DASHED WHITE EPOXY RESIN PAVEMENT STRIPING, 3' LINE & 9' GAP (ITEM 748509)	330 LF
(F)	12" SOLID BLACK EPOXY RESIN PAVEMENT STRIPING, 3' LINE & 9' GAP (ITEM 748539)	215

CONDUIT RUN SCHEDULE					
CR#	#OF CON	SIZE	LENGTH	B/T/O	AMOUNT AND TYPE OF CABLE/ WIRE
45	Pathway Information Shown on Sheet SSC-B				
52	1	2.5"	10'	T	Comm. Cable
53	1	2.5"	10'	T	Power
54	1	4"	90'	T	Comm. Cable
55	1	4"	75'	T	Comm. Cable
56	3	2.5"	10'	T	Comm. Cable
57	2	2.5"	15'	T	Comm. Cable
58	2	2.5"	10'	T	Comm. Cable
59	1	1.5"	285'	T	Weather Sensor
60	1	4"	600'	T	Comm. Cable
61	1	4"	600'	T	Comm. Cable
81	1	2"	15'	T	Power
82	1	2"	75'	T	Power
83	1	2"	90'	T	Power
84	1	2"	130'	T	Power
85	1	2"	250'	T	Power
86	1	2"	250'	T	Power
87	1	2"	250'	T	Power

B = BORE, T = TRENCH, O = OPEN CUT.  
 \* QUANTITY REFLECTS CONTINUATION OF PATHWAY SHOWN ON SHEET SSC-12

PAVEMENT MARKINGS LEGEND		
SYMBOL	ITEM	QUANTITY
(G)	3" SOLID BLACK EPOXY RESIN PAVEMENT STRIPING (ITEM 748557)	850 LF
(H)	9" RETROREFLECTIVE PREFORMED PATTERNED CONTRAST MARKING, 10' LINE & 30' GAP (ITEM 748547)	215 LF

REMOVE EXISTING CCTV AND RETURN TO DELDOT TRAFFIC.

PROPOSED CCTV CAMERA, WEATHER STATION, POLES, CABINET, CABLE TO BE FURNISHED AND INSTALLED BY DELDOT TRAFFIC FORCES. DEVICES TO COMMUNICATE TO THE TMC VIA FIBER CONNECTION AND BE POWERED VIA POWER FEED

PROPOSED RTMS DETECTOR, POLE, CABINET, CABLE AND SOLAR EQUIPMENT, TO BE FURNISHED AND INSTALLED BY DELDOT TRAFFIC FORCES. DETECTOR TO COMMUNICATE TO THE TMC VIA FIBER CONNECTION AND BE POWERED VIA POWER FEED.

**NOTES:**

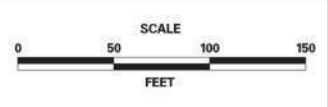
- ALL PROPOSED ITMS CONNECTIONS AND TERMINATIONS SHALL BE COMPLETED BY DELDOT FORCES. THE CONTRACTOR SHALL CONTACT DELDOT'S SIGNAL CONSTRUCTION MANAGER AT 302.222.5920 TEN (10) DAYS PRIOR TO REQUIRED WORK
- ALL UNDERGROUND ITMS FACILITIES TO BE INSTALLED BY THE CONTRACTOR. PRIOR TO COMPLETION OF UNDERGROUND FACILITIES THE CONTRACTOR SHALL CONTACT DELDOT'S SIGNAL CONSTRUCTION MANAGER AT 302.222.5920 TEN (10) DAYS PRIOR TO COMPLETION OF FACILITY.
- ALL PROPOSED ITMS DEVICE TO BE FURNISHED AND INSTALLED, AND BY DELDOT TRAFFIC FORCES. UPON CONTACT BY THE CONTRACTOR DELDOT TRAFFIC FORCES WILL DEVELOP A SCHEDULE OF WHEN WORK CAN BE PERFORMED AVOIDING CONFLICT WITH THE CONTRACTORS SCHEDULE.
- CONTRACTOR SHALL BE RESPONSIBLE FOR ALL INSTALLATION AND REMOVAL OF ALL PROPOSED, TEMPORARY AND EXISTING STRIPING AS REQUIRED. ALL PROPOSED MARKINGS SHALL TIE INTO EXISTING MARKINGS IN ACCORDANCE WITH THE MUTCD AND AS DIRECTED BY THE DELDOT'S CONSTRUCTION ENGINEER.
- THE CONTRACTOR SHALL INSTALL AND REMOVE THE REGULATORY, WARNING, AND SPECIAL SIGNS AND POSTS WITHIN THE CONTRACT LIMITS, AS SHOWN. DELDOT SHALL FABRICATE AND SUPPLY THE REGULATORY, WARNING, AND SPECIAL SIGNS AND POSTS TO THE CONTRACTOR. FOR COORDINATION AND PICK UP OF ALL SIGNS AND POSTS, THE CONTRACTOR SHALL CONTACT DELDOT'S SIGN SHOP AT 302.760.2581. ALLOW FOUR (4) WEEKS FOR DELIVERY. ALL SIGNING MATERIALS REMOVED FROM THIS PROJECT SHALL BE RETURNED TO DELDOT'S SIGN SHOP.
- CONTRACTOR SHALL INSTALL RAISED PAVEMENT MARKERS IN ACCORDANCE WITH THE MUTCD.

SIGNING LEGEND	
①	REMOVE EXISTING SIGN
②	EXISTING SIGN TO REMAIN
③	PLACE NEW SIGN
④	RENEW EXISTING SIGN
⑤	REPOSITION EXISTING SIGN

**SIGN NOTE:**  
 ALL EXISTING REGULATORY, WARNING, AND SPECIAL SIGNS ASSUMED TO BE REMOVED UNLESS OTHERWISE NOTED.



ADDENDUMS / REVISIONS	
ADDENDUM NO. 3	THIS SHEET 721A REPLACES VOIDED SHEET 721 02/18/2011, JCR



**SR1 / I-95 INTERCHANGE**

CONTRACT	BRIDGE NO.
28-090-03	
COUNTY	DESIGNED BY: RK&K
NEW CASTLE	CHECKED BY: JCR

**SIGNING, STRIPING & CONDUIT PLAN**

<b>SSC-11</b>
SHEET NO.
721A
TOTAL SHTS.
803

2/16/2011 3:34:54 PM M:\projects\23\*59\_deltmpk\SR1\Main\Cadd\2809003\Plans\cp89\_SSC\_srt1.dgn